

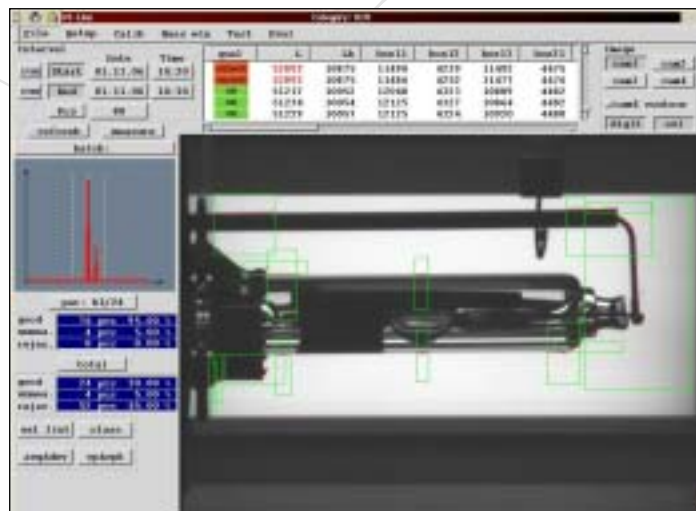
## QualiLine-L

In-line precision measurement and inspection systems

The QualiLine-L series of inspection systems use high speed image processing and analysis methods to check geometrical parameters of a wide variety of small metal and plastic components. They can be integrated into production lines at different positions allowing inspection either of work in progress or the final product. Using multiple cameras and illumination sources, QualiLine-L can readily be adapted to a host of different applications and industries.

### Key features:

- 100% in-line inspection
- Real-time yield statistics
- Inspection of work in progress or final product
- 3-D inspection
- Feedback of statistical process control data
- Non-contact inspection
- No disruption to production line



### Benefits

100% inspection of volume-manufactured components at critical points in the production process allows problems to be identified at an early stage. Eliminating these before the final product is assembled results in considerable cost savings. With multiple measurements being made on each and every component, data from each inspection station can be transferred to the production controller for statistical process control. Analysis of this data highlights variations from individual production cells if multiple assembly systems feed into a single production line, or specific problems such as premature tool wear. By seamlessly integrating QualiLine-L into the production line, the overall process speed is not effected. Feedback from the QualiLine-L system can be used to trigger automatic diversion of faulty components away from the next stage of assembly. Interlinking with the assembly equipment allows process adjustments to be made until measured parameters are within tolerance.

### Measured parameters

- Size
- Shape
- Position
- Orientation
- Presence / absence of parts
- Colour

## QualiLine-L

In-line precision measurement and inspection systems

### High speed analysis

QualiLine-L uses high speed image processing and analysis techniques to make hundreds of measurements on a host of different parameters. The versatility of QualiLine-L means that it can be adapted to almost any production line environment. QualiLine-L systems are successfully used in applications that handle tens of thousands of components per hour. By inspecting every single item produced, nothing is left to chance; defects are eliminated and costs are reduced.



### Applications

- Shape and size of small components
- Relative alignment of small components
- Positional accuracy before welding
- Character recognition for correct identification of components
- Detection of cracks
- Mould tool inspection



### Falcon-Vision ZRt.

Dugonics u. 11,  
H-1043 Budapest  
Tel: +36 1 272 1195  
+36 1 370 0010 ext. 479  
Fax: +36 1 370 0005  
E-mail: office@falcon-vision.com